

Reserve Bank of India (RBI) approves Risk-Based Deposit Insurance

The **Central Board of the RBI** approved the **risk-based deposit insurance premium framework**.

- It will replace the **current flat-rate system** (of 12 paise per Rs 100 deposit).
- The main objective of **deposit insurance** is to protect depositors' money against bank failure.

What is a risk-based deposit insurance premium framework?

- In it, the insurance premium **charged to banks depends upon their risk profile**.
 - Safer, well-managed banks** pay lower premiums; riskier banks **pay higher premiums**.
- Objective:**
 - To incentivise **sound risk management and reward prudent behavior with lower costs**.
 - Reduce moral hazard** by discouraging banks from taking excessive risks.

Deposit Insurance Framework in India

- Managed by **Deposit Insurance and Credit Guarantee Corporation (DICGC)**.
 - DICGC** works in accordance with the provisions of the **Deposit Insurance and Credit Guarantee Corporation Act, 1961**.
 - It is a wholly owned subsidiary of **the RBI**.
- Maximum Insurance Coverage is **₹5 lakh**.
- Insurance premium is **paid by banks**, not depositors.
- DICGC insures all deposits such as savings, fixed, current, recurring, etc. deposits except the deposits of foreign Governments, Central/State Governments, etc.
- Insurance coverage includes:** All commercial banks including **branches of foreign banks functioning in India, local area banks and regional rural banks**, All State, Central and Primary cooperative banks but **it excludes primary co-operative societies**.

Corporate Social Responsibility (CSR) must include Environmental Responsibility: Supreme Court (SC)

The SC ruled that CSR inherently includes environmental protection, in the **MK Ranjitsinh & Others v Union of India** case, linking CSR obligations to constitutional duties and biodiversity conservation.

Key Observations by the Court

- Corporations as Constitutional Actors:** Corporations, as legal persons and key organs of society, are bound by **Fundamental duty** under **Article 51A (g)** to protect the environment and wildlife.
 - Article 51A (g)** mandates to protect and improve the **natural environment** including **forests, lakes, rivers and wildlife**, and to have compassion for living creatures.
- CSR is an Obligation, Not Charity:** Allocation of CSR funds for environmental protection is a constitutional duty, not a voluntary philanthropic act.
- Polluter Pays Principle for Species Recovery:** Where corporate activities threaten endangered species, companies must bear the cost of in-situ and ex-situ conservation.

About Corporate Social Responsibility

- Legal Provision:** CSR is a mandatory requirement for certain companies under **Section 135** of the **Companies Act, 2013**, compelling them to undertake activities that contribute to the social, environmental, and **economic development** of the country.
- Fund Allocation:** Companies are obligated to allocate **at least 2%** of their **average net profit of the preceding three years** to CSR activities.
- Activities covered under CSR:** Eradicating hunger, poverty and malnutrition, promoting gender equality, ensuring environmental sustainability, etc.

Criteria for CSR Eligibility



Net worth of the company to be Rs 500 crore or more



The company turnover is Rs 1000 crore or more



Net profit of the company to be Rs 5 crore or more

Second WHO Global Summit on Traditional Medicine in New Delhi concluded

Key developments at summit

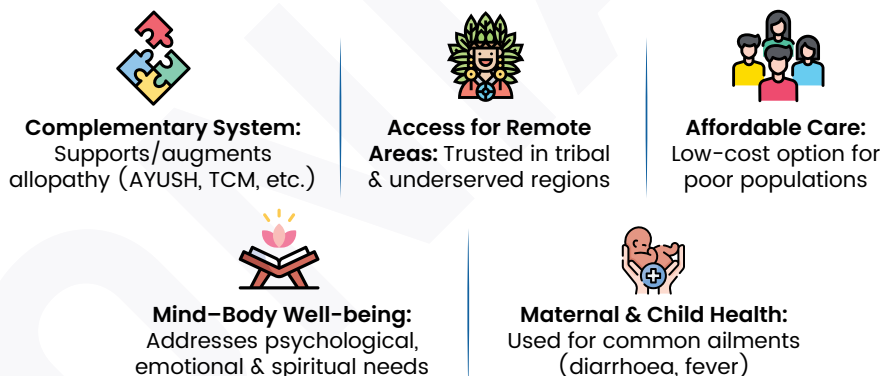
- **Launch of Traditional Medicine Global Library:** Ensures **equitable global access** to scientific data, policy resources and validated knowledge.
- **WHO South-East Asia Regional Office (SEARO)** building inaugurated in New Delhi.
- **Launch of My Ayush Integrated Services Portal (MAISP):** A Master digital portal for **Ayush sector**.
- **Launch of Ayush Mark:** Proposed global quality benchmark for AYUSH products/services.
- **Adoption of Delhi Declaration:** Recognises traditional medicine as **shared biocultural heritage** and aligned with **WHO Global Traditional Medicine Strategy 2025–2034**.

About Traditional Medicines

- **Definition:** Traditional medicine encompasses codified and non-codified healthcare systems rooted in historical and cultural traditions that predate biomedicine.
- **India's Traditional Medicine Systems:** India's AYUSH sector (Ayurveda, Yoga and Naturopathy, Unani, Siddha, and Homoeopathy) is valued at \$43.4 billion and has expanded nearly eight-fold in the past decade.
- **Initiatives for traditional medicine in India:**

- ⊕ **National AYUSH Mission (NAM) 2014:** Centrally Sponsored Scheme strengthens infrastructure, services & co-location of AYUSH facilities.
- ⊕ **Ayurgyan:** For **research & capacity building**, drug standardisation, medicinal plant research etc.
- ⊕ **AOGUSY (AYUSH Oushadhi Gunvatta evum Uttapadan Samvardhan Yojana):** Focus on drug quality, standardisation & pharmacovigilance.
- ⊕ **Other Initiatives:** IEC campaigns, **Medical Value Travel (MVT)** and **Digitisation** like Ayush Grid, Traditional Knowledge Digital Library.



Significance of Traditional Medicine



Securities Markets Code (SMC), 2025 Bill tabled in Lok Sabha

It will consolidate the provisions of SEBI Act, 1992, Depositories Act, 1996 and Securities Contracts (Regulation) Act, 1956 into a rationalized single Securities Markets Code to govern India's securities markets.

Key provisions of the Bill:

 Key provisions of the Bill: 	
Expansion of SEBI Board:	<ul style="list-style-type: none"> Board strength increased from 9 to 15 members. It will now consist of Chairperson, 2 members from Central Government ministries, 1 RBI nominee, and 11 other members (minimum 5 whole-time members).
Expanded Definition of Securities	<ul style="list-style-type: none"> Definition is widened to expressly include hybrid instruments, electronic gold receipts, zero coupon zero principal instruments, and onshore rupee bonds issued by multilateral institutions. SEBI, in consultation with other regulators, may frame regulations to enable a seamless process for listing "other regulated instruments".
Conflict of interest and accountability	<ul style="list-style-type: none"> Bill empowers the removal of a SEBI Board member if they acquire any financial or other interest likely to prejudice the discharge of official functions. Members will also be required to disclose any direct or indirect interest, including those of family members.
Limitation Period for SEBI Investigations	<ul style="list-style-type: none"> SEBI cannot order inspection or investigation after eight years from the date of the alleged default or contravention. Exceptions are provided for cases involving systemic market impact or references from investigating agencies.
Safeguard investor interests	<ul style="list-style-type: none"> SEBI will be mandated to specify investor charter to safeguard investor interests and encourage participation in the securities markets. The code also provides for SEBI to lay down an Investor Grievance Redressal Mechanism.
Decriminalization of Minor and Procedural Defaults	<ul style="list-style-type: none"> It reclassifies many such defaults as civil violations, making them punishable through monetary penalties rather than criminal prosecution.

Also In News



Doppler weather radars (DWRs)

Currently, 47 DWRs are in operation across India, with 87% of the country's total area under radar coverage.

About DWRs

- These are **ground-based radar systems used by meteorological agencies** to detect rain, thunderstorms, cyclones etc.
- It can provide information on **both the position of targets as well as their movement**.
- In India, DWR of varying frequencies — **S-band, C-band and X-band** — are commonly used by the IMD.

How Doppler Weather Radars Work?

- It uses the Doppler Effect i.e. Change in frequency of a wave when the source is moving.
- Radar emits **radio waves from an antenna**. When waves hit atmospheric objects (**raindrops, snow, hail**), part of the energy is reflected back.
- Time taken for signal return helps **determine the distance and intensity of precipitation**.
- Larger particles reflect more **energy, enabling estimation of rainfall strength**.



Support to Poor Prisoners Scheme

Revised guidelines and Standard Operating Procedure for **'Support to Poor Prisoners' Scheme** have been released by the **Ministry of Home Affairs**.

About Support to Poor Prisoners' Scheme, 2023

- Objective:** Enable release of **indigent prisoners/undertrials** unable to pay **fines or furnish bail sureties**; thus reducing **prison overcrowding**.
- Nodal agency:** The National Crime Records Bureau (NCRB).
- Institutional Mechanism:**
 - District-level Empowered Committee**, examines eligibility of prisoners, assess requirement of financial assistance for bail/ fine and recommend release of funds.
 - State-level Oversight Committee**.
- Exclusions:** Scheme is not applicable to offences under **Prevention of Corruption Act, PMLA, NDPS Act and UAPA**.
 - Also excludes **heinous crimes** like Terrorism, national security offences, Dowry death, rape, human trafficking and **POCSO Act**.
- Jail Superintendent** has to inform **District Legal Services Authority (DLSA)** within **1 week** if release is stalled due to non-payment of fine.



Bureau of Port Security (BoPS)

A dedicated body, the Bureau of Port Security (BoPS), will be constituted for the security of vessels and port facilities.

About Bureau of Port Security (BoPS)

- It shall be constituted as a **statutory body under the provisions of Section 13 of the Merchant Shipping Act, 2025.**
 - ⌚ It is being modelled on the lines of the Bureau of Civil Aviation Security (BCAS).
- **Objective:** It shall be **responsible for regulatory and oversight functions relating to the security of ships and port facilities.**
- **Key Functions:** It shall also ensure **timely analysis, collection and exchange of security-related information**, with a special focus on **cyber security**.
- It will function under the aegis of the **Ministry of Ports, Shipping and Waterways**.

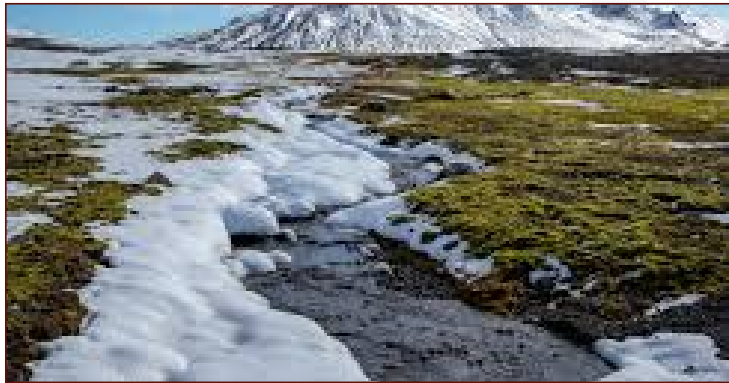


Tundra Biome

According to a study, wildfires in the tundra have been more active this past century than at any time in the past 3,000 years.

About Tundra Biome

- **Location:**
 - ⌚ Arctic regions, **between 60° to 70° North latitude**, span the **northern parts of North America, Europe, and Asia, Antarctic tundra on the Antarctic Peninsula.**
 - ⌚ Alpine tundra occurs on **high mountain tops around the world above the tree line (2400 meters to 1000meters).**
- **Characteristics:**
 - ⌚ The environment is harsh, **with low precipitation** (less than 25 centimeters), **poor soil nutrients**, etc.
 - ⌚ They are largely treeless.
- **Flora and Fauna:** Mosses, lichens, grasses, sedges, and dwarf shrubs, Arctic fox, caribou, musk ox, lemming, and polar bear etc.



IN-SPACE

IN-SPACE has rolled out a Request for Proposal to establish Antariksh Prayogshala (Space Labs) at select academic institutions across India.

About Indian National Space Promotion and Authorization Center (IN-SPACE)

- **Genesis:** Established in 2020.
- **Autonomous agency:** A single-window, independent, nodal agency that functions as an **autonomous agency** in the **Department of Space**.
- **Objective:** Space sector reforms to enable and facilitate the participation of private players.
- **Function:** Responsible to promote, enable, authorize and supervise various space activities of non-governmental agencies.
 - ⌚ **Acts as an interface between ISRO and Non-Governmental Entities (NGEs).**



SC Guidelines in child trafficking cases

SC Lays Down Guidelines To Evaluate Evidence Of Victims in child trafficking cases

- Court observed that child trafficking and commercial sexual exploitation of children is a "deeply disturbing reality" in India.

Guidelines to evaluate evidence of victims

- **Vulnerability of Victim:** Judicial scrutiny must recognise **Socio-economic and cultural vulnerability** of child victims.
- **Minor inconsistencies** in a trafficked child's testimony **must not discredit** her evidence.
- **Sole testimony of the victim** is sufficient if it is **credible and convincing**.
- **Secondary Victimisation:** Recounting abuse causes **psychological trauma**, stigma and fear of retaliation. Judicial evaluation must show **sensitivity and realism**.
- **A trafficked child:** Must not be treated as an accomplice but as an "injured witness", deserving due regard and credence.



Pulsars

James Webb Space Telescope Discovers A Bizarre Lemon Shaped World Orbiting A Pulsar

Pulsar

- It is a rapidly spinning neutron star that **emits beams of electromagnetic radiation (mostly radio waves)** from its magnetic poles.
 - ⌚ Pulsars are **usually** formed after the supernova explosion of a massive star.
- **Rotation speed:** Can rotate dozens to hundreds of times per second.
- **Cosmic Clocks:** Highly stable rotation makes pulsars precise natural timekeepers.

Place in News



Syria (Capital: Damascus)

US launched massive airstrikes on dozens of Islamic State targets in Syria.

Political Features

- Lies in West Asia, on the **east coast of Mediterranean Sea (West)**, in the **Levant region**.
- **Bordering Countries:** Turkey (North), Iraq (East), Jordan (South), Israel and Lebanon (West).
 - ⌚ Israel seized the **Golan Heights** from Syria in 1967 Six-Day War

Geographical Features

- **Major Physical Regions:** Syrian Desert, Euphrates River Valley, and Anti-Lebanon Mountains (mark Syria's border with Lebanon).
- **Major Rivers:** Orontes, Tigris, etc.



AHMEDABAD



BENGALURU



BHOPAL



CHANDIGARH



DELHI



GUWAHATI



HYDERABAD



JAIPUR



JODHPUR



LUCKNOW



PRAYAGRAJ



PUNE



RANCHI